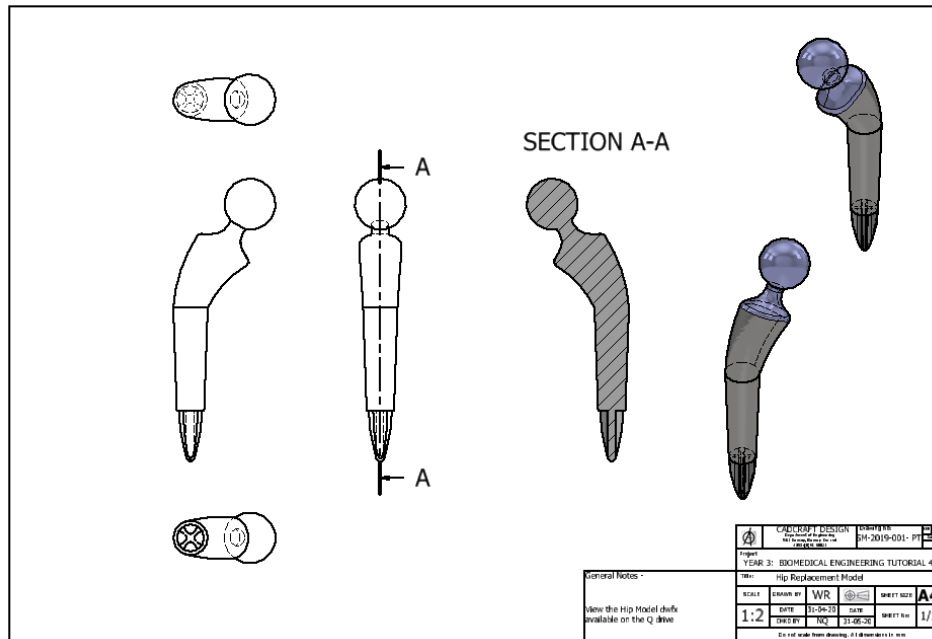




Year 3: Bio Medical Engineering: Tutorial 4



Instructions:

- Referring to the course notes, web based research and the example model part of a Hip available on the Q Drive design and model a complex cement less Hip Replacement part.
(It should not be a direct copy of the part available on the Q drive, but analysis of this part will give you an idea of the modelling process.)
- Use approximate sizes and form to model your part as it is the modelling procedure that is important for this tutorial.
- Save the completed model as **Tutorial 4.ipt** file for handing in this case.